

Aluminum Jacks

Model number	AJ	10	08
Aluminum jack			
Capacity (ton)			
Stroke (cm)			

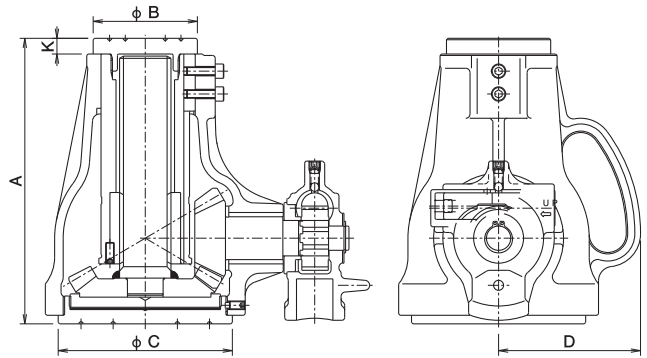
Application

- Centering machinery works.
- Movement for precision machinery.
- Works for construction, higher place job.
- Minor movement for heavy machinery.

Features

- Light weight Aluminum Jack due to aluminum body.
- Aluminum jacks enjoy pad bearings instead of normal bearings.
- Light weight, lower height.
- Two handle bar can use as one handle bar.

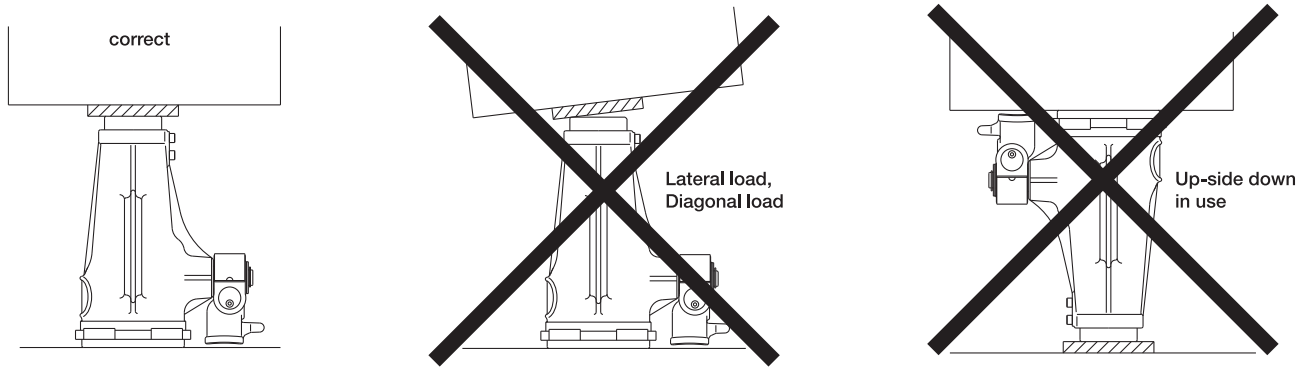
Dimensional drawing



AJ-1008

AJ-2510

How to use



※Do not use in up-side down or pulling force.

Specifications

Items	Model Unit	AJ-1008	AJ-1510	AJ-2510
Capacity	kN(tf)	100(10)	150(15)	250(25)
Stroke	mm	80	100	100
Operational torque	N·m	250	420	700
Closed height	mm	175	200	200
Head diameter (φB) (cap)	mm	58	58	73
Base diameter (φC)	mm	102	102	122
D	mm	88	89	100
K	mm	10	10	11
Weight approx.	kg	6.1	6.8	9.5
Attached handle bar		φ 27.2×575L	φ 27.2×575L	φ 30×675L

Notes. ① Usable grease: Daphne Eponex Grease EP No.1 or equivalent ② Jacks cannot attach to safety bed or traversing bed.
 ③ Treat jack with care and avoid rough handling during use.