

## Punchings (RPF Series)

- Can be used for large steel angles such as channel-section and H beams thanks to a wide span provided.
- The cutter can be easily removed thanks to the use of a double-acting cylinder.

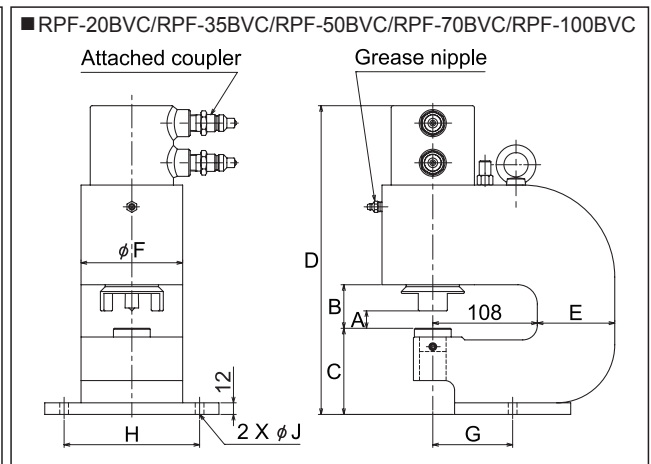
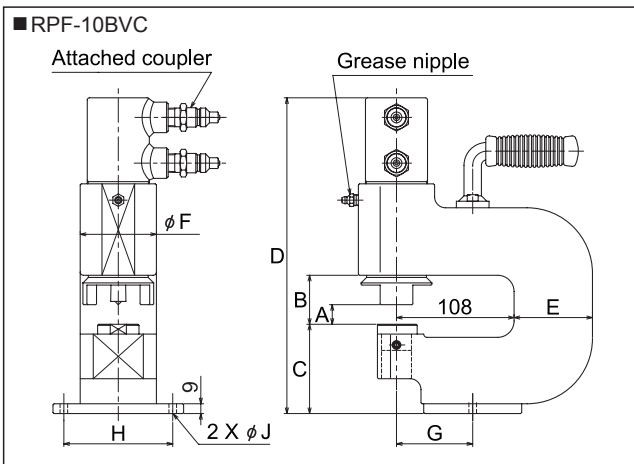


### Model code structure

<b>RPF</b>	<b>-</b>	<b>10B</b>	<b>VC</b>
Punching		10B : 100kN 20B : 200kN 35B : 350kN (Make-to-order product) 50B : 500kN (Make-to-order product) 70B : 700kN (Make-to-order product) 100B : 1000kN (Make-to-order product)	Attached coupler VC : With VC-70 coupler

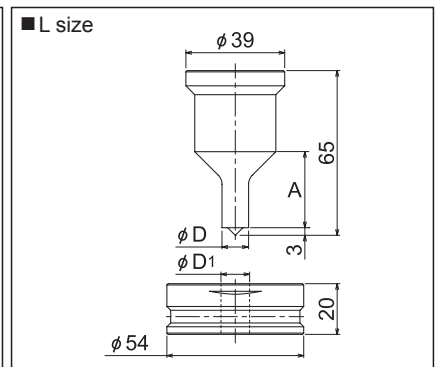
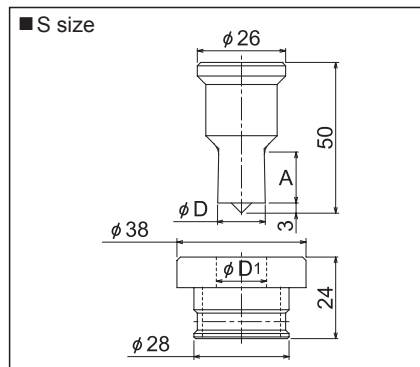
### Specifications

Model	Maximum output kN	Maximum operating pressure MPa	Stroke mm	Required oil volume cm <sup>3</sup>	Attached coupler	Approx. weight kg	A	B	C	D	E	φ F	G	H	φ J	
RPF-10BVC	100	70	25	37	VC-70-R3	18.5	18	45	82	(290)	72	70	70	100	7	
RPF-20BVC	200		25	83		VC-70-R4	40	18	45	89	(319)	80	105	82.5	140	9
RPF-35BVC	350		27	136			66	20	68	97	(446)	100	130	87	160	11
RPF-50BVC	500		35	250	75		24	68	132	(507)	135	110	85	150	11	
RPF-70BVC	700		35	360	105	28	68	127	(506)	150	130	100	160	11		
RPF-100BVC	1000		35	513	150	28	68	142	(579)	180	150	100	180	11		



### Punch and die dimensions table

Model	Punch	Punch	Die
	φ D	A	φ D1
<b>S size (for RPF-10B/20B)</b>			
RPF-3/8S	10.5	17	11.3
RPF-1/2S	14.0	17	14.8
RPF-5/8S	17.5	17	18.3
RPF-3/4S	21.0	17	21.8
<b>L size (for RPF-35B/50B/70B/100B)</b>			
RPF-3/8L	10.5	30	11.3
RPF-1/2L	14.0	30	14.8
RPF-5/8L	17.5	30	18.3
RPF-3/4L	21.0	30	21.8
RPF-7/8L	24.0	30	24.8
RPF-1L	27.5	30	28.3
RPF-1-1/8L	31.0	30	31.8



- \*S-size cutter (φ 18: RPF-18S) is also available.
- \*L-size cutters (φ 18: RPF-18L), (φ 22: RPF-22L), (φ 25: RPF-25L) are also available.
- \*A punch and die can be purchase as a set only.
- \*Special cutters can be manufactured. Specify φ D when ordering. (Make-to-order product)

### Punching load table (unit: kN) Material = SS400

Plate thickness / Hole diameter	3.2	4.8	6	8	9	10	12	16	19	20	22	25
10.5	42	62	78	103	116	129	155	207	246	258	285	323
14.0	55	83	103	138	155	172	207	276	328	345	379	431
17.5	69	103	129	172	194	215	258	345	409	431	474	539
21.0	83	124	155	207	233	258	310	414	492	517	569	647
24.0	95	142	177	237	266	296	354	473	561	591	651	739
27.5	108	162	203	271	304	339	406	542	644	677	745	847
31.0	118	177	222	296	333	369	444	591	702	739	813	924